

# **Emergency Preparedness: Considerations for Being Ready at Work and Home**

**Dr. Claudia M. Lara**

**Coordinator**

**Office of Emergency Services**

**Los Angeles Unified School District**





# Topics to Address

- Disaster Service Workers
- School Preparedness
- Classroom Preparedness
- Considerations for Home Preparedness
- Resources/Opportunities



# Disaster Service Workers





When disaster strikes, by law, all District employees become “disaster service workers\*.”

– AND –

As District employees, we cannot abandon our responsibility to the students and one another.

\*Section 3100 of the California Government Code





**We plan to care for students for multiple days following a disaster.**





**What do you think the District's emergency priorities would be in the event of a major disaster or emergency?**





# School Preparedness



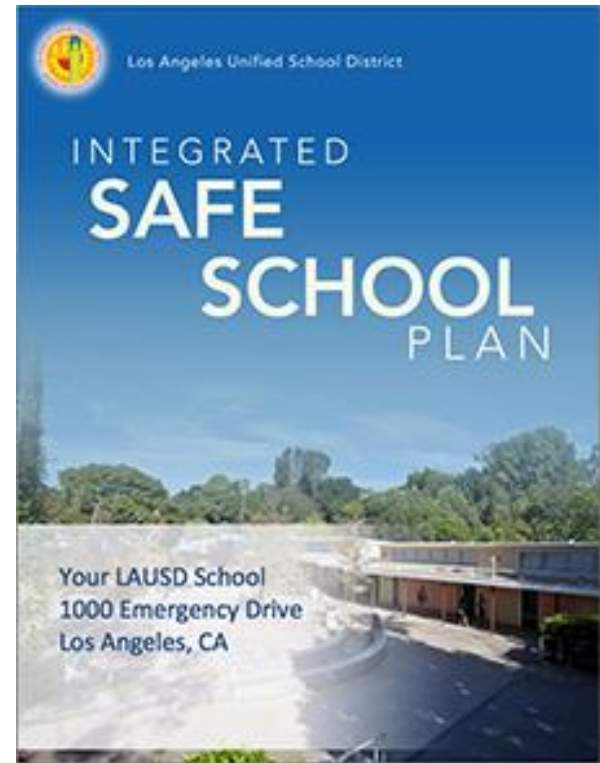


**What does ISSP stand  
for?**





# Integrated Safe School Plan



**Reference Guide 5511: Completing and Updating the ISSP**



# LAUSD has extensive school safety plans.



The Integrated Safe School Plan  
is for everyone who works at your school.

**PUT THE "I" IN ISSP**

**I KNOW THE PLAN | I KNOW MY TEAM | I KNOW MY DUTIES**



**Emergencies**  
happen at school.

**LOG ON TODAY AT**  
**ISSP.LAUSD.NET**

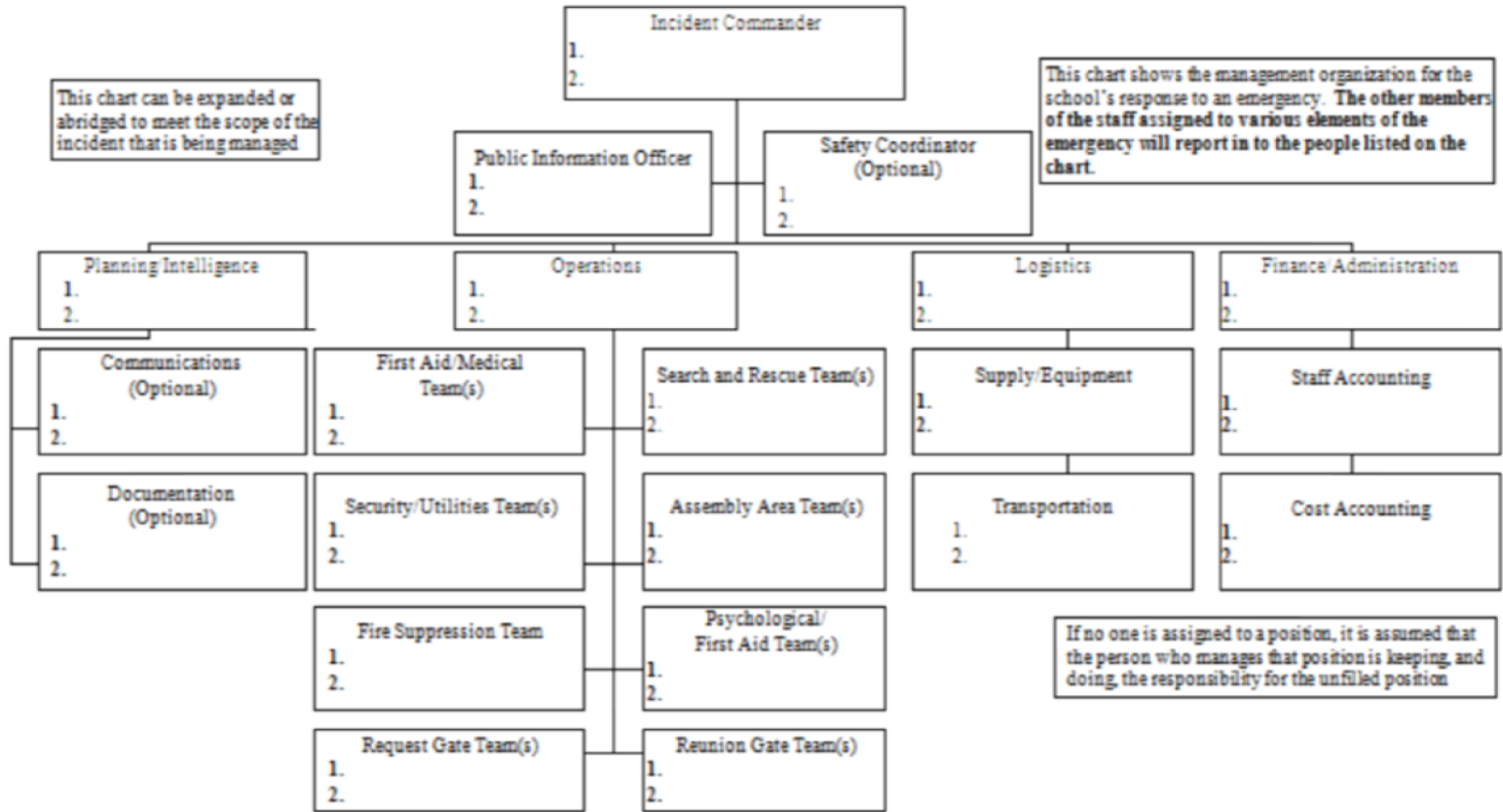


**Plans are updated annually and on an ongoing basis.**





## EMERGENCY MANAGEMENT ORGANIZATION CHART



### The Standard Emergency Management System

*Note: This Organization Chart is based on SEMS, and adapted for LAUSD use. The Principal and School Safety Planning Committee should use discretion in making further modifications to address specific needs of the school. **The first name in the box represents the primary responsible person whereas the second name denotes the backup***

# Used in LAUSD schools and the EOC





**What have you  
discovered about your  
school's ISSP?**





**School emergency supplies are kept at every site.**

A cargo container of emergency supplies is on every school campus.







Emergency water is the most important item to consider when preparing for an emergency.



# Formula used to calculate the amount of water needed at a school for a 3-day emergency:



$$\begin{array}{l} \text{\# of} \\ \text{students} \\ \text{and staff} \end{array} \times \frac{1}{2} \text{ gallon} \\ \text{each} \times 3 \text{ days} = \text{Total water} \\ \text{needed in} \\ \text{gallons}$$

$$\frac{\text{\# gallons}}{55 \text{ gallons/drum}} = \text{\# drums}$$

**District commercial First Aid kits should be found in each cargo container.**



**Requirement: 1 District First Aid kit per 400 individuals**

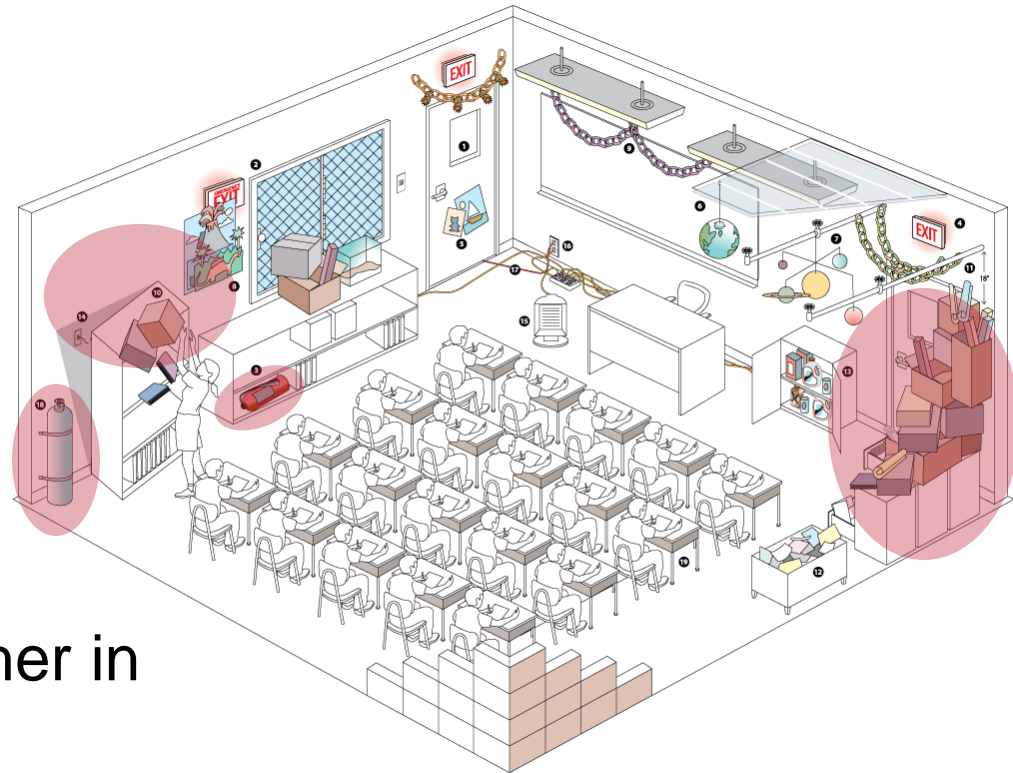




# Classroom Preparedness

# Being prepared means having your classroom safe at all times. Avoid injuries by not having hazards in your classroom.

- Do not stack things above head level
- Do not block emergency exit signs or passageways
- Keep your fire extinguisher in operating condition and strapped to a wall





**Los Angeles Unified School District**  
**EMERGENCY**  
**PROCEDURES/DRILL**

---

**IN PROGRESS:**  
**SCHOOL NOT CURRENTLY**  
**ACCESSIBLE TO PUBLIC.**  
**For further information, please call**

---

**Distrito Escolar Unificado De Los Angeles**  
**PROCEDIMIENTOS DE**  
**EMERGENCIA / EJERCICIOS**

---

**EN PROGRESO**  
**LA ESCUELA NO SE ENCUENTRA**  
**ACTUALMENTE ACCESIBLE AL PUBLICO**  
**Para mas information, por favor llame al**

---

# Drill Types

- Fire
- Earthquake
- Lockdown
- Shelter in Place
- Take Cover
- Rapid Relocation (staff only)



**Practice emergency drills regularly so that emergency procedures become more familiar.**



# Emergency Classroom Quick Guide



DIVISION OF DISTRICT OPERATIONS - EMERGENCY SERVICES

## EMERGENCY Classroom Quick Guide



### 🏠 EARTHQUAKE (Drop, cover, hold on)

#### Drill Frequency: Monthly practice

**Signal:** Command from staff member or shaking felt

**Procedures: Inside Classroom:** Drop to knees, facing away from windows • get under furniture/equipment • grasp furniture (table leg, etc) with hands and hold tightly/cover head • wait quietly for further instructions. **On school grounds, outside buildings:** Stay clear of buildings, power lines, light poles, etc. • drop to the ground • cover head • hold on to stable object if available • remain clear of obstacles and wait quietly for further instructions. **On the way to or from school:** Move away from all buildings, other structures, and trees • assume "Drop/Cover/Hold on" position if possible • cover head if possible • hold on to stable object if available until situation stabilizes.

**All Clear:** Announcement by staff member that incident is over

### 🔥 FIRE (School building or adjacent area burning)

**Drill Frequency:** First week of Elementary/Middle School until proficient, then once per month • each semester and summer session at High School

**Signal:** Fire alarm

**Procedures:** Evacuate to designated areas quickly, quietly, and safely • Teachers will take attendance rosters, take roll and report missing students • wait in designated areas for instructions.

**All Clear:** Announcement by staff member that incident is over

### 👤 SHELTER IN PLACE (Airborne contaminant, indement weather, or other outside hazard)

**Drill Frequency:** Review once a semester and summer school

**Signal:** PA announcement, phone call, messenger, or e-mail

**Procedures: Inside Classroom:** Bring students inside • close and lock all doors, windows and blinds • turn off HVAC system • cover vents to the outside and cracks by doors and windows • take roll and report missing students • remain in room until the all-clear signal. **On school grounds, outside buildings:** Proceed to the closest room and remain inside until the all-clear signal.

**All Clear:** Announcement by staff member that incident is over

### 🔫 TAKE COVER (Gunfire nearby)

**Drill Frequency:** Review once per semester and summer school

**Signal:** Command from staff member or gunfire nearby

**Procedures: Inside Classroom:** Drop to knees with back to window, place head in lap and clasp hands behind the neck • wait quietly for instructions. **On school grounds, outside buildings:** Seek any type of protection • drop to the ground with back to hazard and clasp hands behind the neck • remain in this position briefly and then seek protective cover • wait for further instructions. **On the way to or from school:** Seek any type of protection (curb, bench, ditch, etc.) • drop to the ground with back to hazard and clasp hands behind the neck • remain in this position briefly and then seek protective cover if necessary • go to the nearest available place of shelter and remain there quietly until instructed to leave by a recognized authority.

**All Clear:** Announcement by authorities that incident is over

### 🔒 LOCKDOWN (Threat of violence or gunfire on/near campus)

**Drill Frequency:** Review once a semester and summer school

**Signal:** PA announcement, phone call, messenger, or e-mail

**Procedures: Inside Classroom:** Bring students inside • close and lock all doors and windows • close blinds • turn off lights • move students away from windows • take roll and report missing students • remain in room until the all-clear signal. **On school grounds, outside buildings:** Proceed to the closest room and remain inside until the all-clear signal.

**All Clear:** Announcement by staff member that incident is over

### 🚨 RAPID RELOCATION (Active shooter incidents meeting ONLY the specific criteria below)

**Drill Frequency:** Oral review once a semester and summer school

**Signal:** PA announcement or command from staff member. **An Active Shooter on campus requires the following two conditions:**

- 1 One or more individuals with a firearm on school grounds who has already shot or attempted to shoot someone/ AND
- 2 At least one of the following factors applies:

- Continues to shoot others
- Actively seeks or attacks others
- Has access to additional victims

If the above conditions apply, a Rapid Relocation may be necessary instead of remaining in a lockdown.

**Procedures:** Call 911  
**Know Before You Go:**

**STAY IN LOCKDOWN if you hear gunfire and cannot determine if the incident meets active shooter criteria.** Be absolutely certain that a Rapid Relocation is the safest course of action to immediately preserve the lives of students and will not place students in the path of the gunman. Consider age, mobility, cognition, school layout, and other school factors.

- A Relocate quickly by any safe exit away from gunman and choose a safe path of travel.
- B Find a safe destination if the designated off-site relocation point is not feasible.
- C Supervise and calm students along the route and at destination.
- D Account for students upon reaching destination and report to administrator or LASPD.

**All Clear:** Announcement by authorities that incident is over

If experiencing a life-threatening emergency on campus, call the Los Angeles School Police Watch Commander at (213) 625-6631 or 911.



## INDIVIDUAL EMERGENCY RESPONSE TIPS

Your initial response is critical - Stay calm and take a deep breath

Look for immediate danger(s)

Know your specific job responsibilities

Incidents usually don't follow a set of rules

Be ready to assume new duties at any time - be flexible

Ask for assistance if needed

### FIRST AID TIPS

**Unconscious victims:** Always call 911 • begin CPR if needed  
**Severe muscle, bone, or joint injuries:** Immobilize injured parts  
**Major open wounds:** Cover with dressing (preferably sterile) • elevate affected area if no broken bones • bandage • apply pressure if needed.

**Shocks:** Always call 911 • lay victim flat • elevate legs if no injuries to head, neck or back • maintain normal body temperature • cover with blanket or jacket.

### EMERGENCY SUPPLIES AT ALL LAUSD SCHOOLS

- ☑ Three-day supply of water and food for students and staff
- ☑ Storage containers for emergency supplies
- ☑ Search and rescue equipment
- ☑ Emergency first aid kits
- ☑ Emergency procedure guidelines

### INDIVIDUAL PREPAREDNESS TIPS

**Prepare your family at home** - Store 7 days of food, water, medications, and other essentials and create a family disaster plan.

**Stash personal emergency supplies** - Keep your own essential supplies in your car and in your classroom/office.

**Train for emergency situations** - STEPS, CERT, FEMA and others offer useful programs.

**Download the LAUSD Emergency Plan app**

**Know your Integrated Safe School Plan (ISSP)**

### RESOURCES

- LAUSD Safety Training for Emergency Preparedness at Schools (STEPS): [achieve.lausd.net/steps](http://achieve.lausd.net/steps)
- You're On Your Own for 7 Days: [achieve.lausd.net/you7](http://achieve.lausd.net/you7)
- Parent Emergency Information for LAUSD: [achieve.lausd.net/parent](http://achieve.lausd.net/parent)
- American Red Cross of Los Angeles: [redcrossla.org](http://redcrossla.org)
- California Office of Emergency Services: [caloes.ca.gov](http://caloes.ca.gov)
- Community Emergency Response Team (CERT): [achieve.lausd.net/cert](http://achieve.lausd.net/cert)
- Earthquake Country Alliance: [earthquakecountry.org](http://earthquakecountry.org)
- Emergency Preparedness for People with Disabilities: [ready.gov/disability](http://ready.gov/disability)
- Federal Emergency Management Agency (FEMA): [fema.gov](http://fema.gov)
- Great California ShakeOut: [shakeout.org](http://shakeout.org)
- LA City Emergency Management Department: [emergency.lacity.org](http://emergency.lacity.org)
- LA County Emergency Survival Program: [espp.lacounty.gov](http://espp.lacounty.gov)
- LA County Public Health: [publichealth.lacounty.gov](http://publichealth.lacounty.gov)
- National Weather Service: [weather.gov](http://weather.gov)
- Personal and Family Emergency Information: [pfeid.gov](http://pfeid.gov)
- Readiness and Emergency Management for Schools: [rems.ed.gov](http://rems.ed.gov)
- United States Geological Survey: [usgs.gov](http://usgs.gov)

### INTERVENTION ACTIVITIES AFTER A CRISIS

- ☑ Avoid media stories about the event
- ☑ Engage in play activities
- ☑ Paint or draw pictures reflecting feelings
- ☑ Write in a journal
- ☑ Read and discuss stories
- ☑ Create a mural or banner reflecting positive recovery events
- ☑ Make a memory book or chart reflecting positive thoughts and actions
- ☑ Take part in individual and group counseling
- ☑ Take care of yourself - get proper rest, nutrition, exercise, and medical care
- ☑ Follow Psychological First Aid recommendations

### PLANNING FOR STUDENTS WITH FUNCTIONAL NEEDS

Create an individual evacuation and care plan for all students with disabilities that may need extra assistance in an emergency. Consider the following needs:

- ☑ Notification of an emergency and communication
- ☑ Evacuation
- ☑ Personal care assistance and supervision
- ☑ Shelter
- ☑ Medication and medical protocols

### LEGAL REFERENCES

**California Govt. Code Section 3100 (Disaster Service Workers' Act)** - All public personnel, including school district and charter school employees, can be declared Disaster Service Workers. As Disaster Service Workers, they can be held at the work site and assigned disaster relief activities to perform until released during a disaster declared by the President or the Governor or proclaimed by the Mayor.

**California Education Code Sections 35295-35297 (Katz Act)** - Requires a comprehensive school safety plan updated annually, emergency drills, hazard mitigation and training.

**California Govt. Code Section 8607 (Petris Act)** - Aligns school emergency procedures with the Standardized Emergency Management System (SEMS) and employee training through drills and exercises on the Incident Command System (ICS).

If experiencing a life-threatening emergency on campus, call the Los Angeles School Police Watch Commander at (213) 625-6631 or 911.





# Individual Emergency Response

- Calm initial response
- Look for immediate dangers
- Know specific role/responsibilities
- Expect potential fluidity of situation
- Flexibility
- Ask for assistance





# Drill Frequency

Type	Elementary	Middle	Sr. High and Adult
<i>Fire</i>	First week of school until proficient, then once per month at minimum, including summer school.	First week of school until proficient, then once per month at minimum, including summer school.	First week of school until proficient, then once per semester at minimum, including summer school.
<i>Lockdown</i>	Within the first 30 days once per semester at minimum, including summer school.	Within the first 30 days once per semester at minimum, including summer school.	Within the first 30 days once per semester at minimum, including summer school.
<i>Earthquake (Drop/Cover/ Hold On)</i>	Once per month at minimum, including summer school.	Once per month at minimum, including summer school.	Once per month at minimum, including summer school.
<i>Shelter in Place</i>	Oral review or drill once per semester at minimum, including summer school.	Oral review or drill once per semester at minimum, including summer school.	Oral review or drill once per semester at minimum, including summer school.
<i>Take Cover</i>	Oral review or drill once per semester at minimum, including summer school.	Oral review or drill once per semester at minimum, including summer school.	Oral review or drill once per semester at minimum, including summer school.

Note: Review with only staff once per semester, the Rapid Relocation procedures for active shooter incidents meeting the specific criteria in BUL 5469.







# If there is a fire, know how to use a fire extinguisher properly and how to determine if safe to use.

- P** for **P**ull the pin
- A** for **A**im
- S** for **S**queeze the handle
- S** for **S**weep



# 1933 Field Act:

- established minimum structural standards for K-12, CA public school buildings
- ensures that school buildings are earthquake resistant

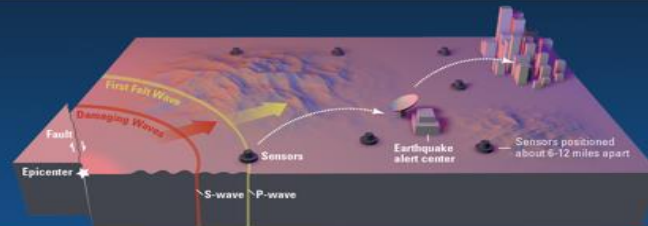


1933 Long Beach Quake



1992 Landers Quake

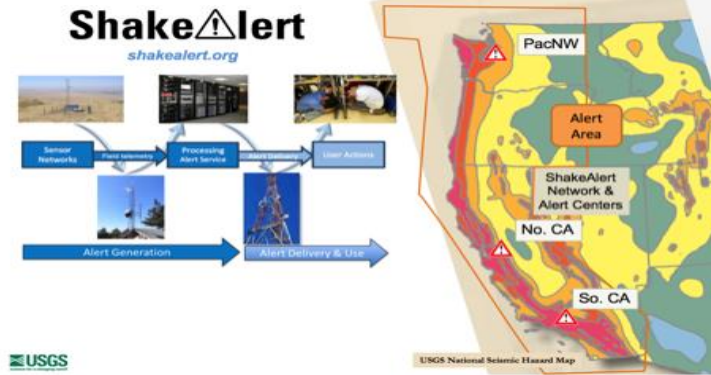
# ShakeAlert™



- Home
- Contact
- FAQ
- News
- Communication, Education, and Outreach
- Implementation
- ShakeAlert Research
- Resources
- Jobs

## ShakeAlert: An Earthquake Early Warning System for the West Coast of the United States

ShakeAlert is an earthquake early warning (EEW) system that detects significant earthquakes so quickly that alerts can reach many people before shaking arrives. ShakeAlert is not earthquake prediction, rather a ShakeAlert indicates that an earthquake has begun and shaking is imminent.



ShakeAlert is live! USGS and the State of California pressed the “go” button on October 17, 2019 beginning the first-ever statewide test of public alerting in California via WEA and the MyShake app.

Be a ShakeAlert Partner OR Host a ShakeAlert Sensor

Primary Institutions



# shakealert.org







# What to do during an Earthquake:



Drop before the earthquake drops you.



Register at [www.ShakeOut.org/california](http://www.ShakeOut.org/california)





# Classroom Emergency Supplies

- sanitation supplies
- snack bars
- bottled water
- basic first aid supplies
- roster
- comfort supplies

**Place by primary evacuation door**





# In an emergency, schools will need an area for a latrine. Toilet can be assembled with supplies from the emergency bin:

- Line bucket with 2 plastic garbage bags
- Add absorbent to bottom of bags
- Place toilet seat on top of bucket
- Your toilet is ready for use.



**Ideal ratio: 1 bucket for every 30 people**

# Additional supplies you will need for your toilet:

- Privacy screening
- Toilet paper
- Sanitary napkins
- Deodorizer
- Hand cleaner / sanitizer





# What Functional Needs Might Students Have?

Mobility

Visual

Deaf/Hard of Hearing

Cognitive

Autism Spectrum

Medically Fragile

Emotional

Medication Dependent

Multiple Disabilities





# Special Needs Considerations:

- Do they fully participate in all drills?
- Do you have the additional supplies they may need?
- Who will need assistance to evacuate?
- Do you have a plan to assist them and shelter them?
- Are your search & rescue and first-aid teams familiar with their needs?
- Learn about your community's emergency plans



# Classroom Preparedness

## Considerations:

- Familiarity with response for each emergency type
- Access to/familiarity with ISSP components
- Access to/familiarity with Emergency Plan App
- Class roster(s), photos/yearbook
- Writing supplies
- Evacuation map
- Comfort supplies/activities for students



# Classroom Preparedness Considerations Cont.

- Emergency backpack, kit
- Review resources at [achieve.lausd.net/afn](http://achieve.lausd.net/afn)
- Buddy teacher contact/arrangements
- Mobile phone and personal items/handbag
- Classroom lockdown kit
- Special needs considerations
- Familiarity with/sufficiency of emergency supplies/equipment





# Classroom Preparedness Considerations Cont.

- CERT training
- First Aid/CPR classes ([redcrossla.org](http://redcrossla.org))
- STEPS courses ([steps.lausd.net](http://steps.lausd.net))
- Regularly review Emergency Classroom Quick Guide
- Conduct schoolwide drills with fidelity
- Referring parents to resources at [achieve.lausd.net/pei](http://achieve.lausd.net/pei)



# Considerations for Home Preparedness



**We may not be able to be with our loved ones during a disaster.**



**Therefore, we need to be prepared at home, too.**



# Ten Essential Emergency Supplies

- Water for 3-10 days
- Food for 3-10 days
- Medications
- Radio
- Flashlights
- First Aid kit
- Cash and important documents





# Ten Essential Emergency Supplies Cont.

- Sanitation & hygiene supplies
- Tools
- Clothing & sturdy shoes







# Additional Items



Camping stove fuel, pots and pans, aluminum foil, paper cups, plates and plastic utensils



Emergency blankets or sleeping bags



Pet Carriers and supplies for your animals and pets



Extra set of car, home and safe deposit box keys



List for emergency telephone numbers and contacts



Medication, portable toilet, toilet paper and plastic bags for human waste



Compass and maps



Pens, pencils, paper tablet to document incident



Toys, candy, crayons and books to keep children busy



# Evacuation Checklist

- Emergency supply kit
- Cash and credit cards
- Out of state contact list
- Family photos
- Important documents
- Change of clothing
- Personal hygiene items



# Evacuation Checklist Cont.

- Medical needs
- Baby items
- Pet care
- Special needs items
- Gas tank half-filled (at minimum)
- Neighborhood, Area Maps



# **STEPS 102**

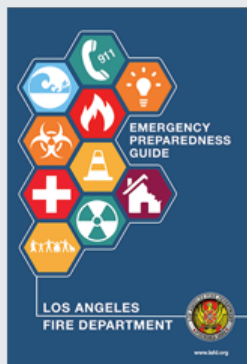
## **Basic Emergency Preparedness for Home**

**access through [achieve.lausd.net/MyPLN](https://achieve.lausd.net/MyPLN)**



# LAFD Resources

START PREPARING NOW



## LAFD Emergency Preparedness Guide

Los Angeles is susceptible to a variety of emergencies both natural and man-made. Not only should we all be prepared and ready for these emergencies, but we should also know what to do before, during, and after an incident occurs. It is extremely important to also be aware of emergency plans that may already exist in your school, work, house of worship, or wherever you may be. This guide will help you get informed, have a plan, and get involved.

[Download Guide](#)

PRINT 

[www.lafd.org/safety/disaster-preparedness](http://www.lafd.org/safety/disaster-preparedness)







# Resources and Opportunities



## Emergency Services

Emergency Services

Administrator's Corner

Integrated Safe School Plan

LAUSD Emergency Documents

Drills and Exercises

Emergency Apps

Emergency Preparedness <

EOC

Disabilities, Access, and Functional Needs

Safe Schools Task Force

Preparation for Storms: Rain and Flood Safety

NOAA Radios and Weather Alerts

Videos and PowerPoints

Critical Employee Emergency Planning <

First Responders

Bookshelf

Links

STEPS Website

YOYO 7 Website

Home > Division of District Operations > Emergency Services > Emergency Services

## Mission Statement

The Office of Emergency Services of the Los Angeles Unified School District is dedicated to assuring that all District employees and students are prepared to respond to any emergency threat or hazard in a reasonable and responsible way and thus ensure that the highest level of safety during an incident is achieved. **Building a resilience-focused culture of emergency readiness throughout LA Unified.**

### **WE ARE READY AND RESILIENT.**

- Providing subject matter expertise and coordination of disaster efforts.
- Strengthening readiness capabilities and capacity through planning, training/exercise, and preparedness campaigns.
- Building effective programs and ongoing program management through the review and update of guidance and policy documents, program data analysis and evaluation.

The Office of Emergency Services in the Division of District Operations provides emergency management for LAUSD. The office oversees the Integrated Safe School Plan system and provides guidance to schools for emergency response protocols, supplies and emergency drills. The STEPS program and the award-winning YOYO 7 campaign are both products of this office. The LAUSD Emergency Operations Center is managed by the Office of Emergency Services, which also provides representation to LA City and LA County and coordinates with other agencies in a large emergency. The office also coordinates the use of schools as public emergency shelters managed by the American Red Cross. **WE ARE READY AND RESILIENT.**

### **About Our Office**

**Administrator:** Jill Barnes, Ed.D, CEM  
Executive Emergency Strategist

**Address:** 333 South Beaudry Ave. 23th Floor  
Los Angeles, CA 90017

**General Line:** 213-241-5337

**Direct Line:** 213-241-3889

**Fax:** 213-241-8950

**E-mail:** [jill.barnes@lausd.net](mailto:jill.barnes@lausd.net)

# achieve.lausd.net/emergencyservices



## STEPS

- ▶ Home
- ▶ Courses
- ⊕ FEMA
- ▶ CERT
- ▶ Demo Reel
- ▶ Partnerships
- ▶ Supplies
- ⊕ Resources
- ▶ Emergency Services
- ▶ YOYO7
- ▶ Parent Emergency Information



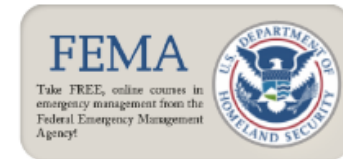
### Welcome to STEPS, the Safety Training for Emergency Preparedness at Schools Program in LAUSD!

STEPS is a series of short, online courses on [MyPLN](#). These courses are designed to prepare LAUSD employees for emergency situations at the school or other work site. STEPS courses are divided into sections for teachers, administrators, school police officers, and all employees.

Courses can be taken in any order, and a certificate of completion is issued at the end of each course. A special Master Certificate of Disaster Preparedness is issued to each employee completing the entire series of courses.

STEPS is operated by the LAUSD Office of [Emergency Services](#) in District Operations.

The STEPS program was funded through a grant from the [Readiness and Emergency Management for Schools](#) (REMS) program of the U.S. Department of Education's Office of Safe and Drug-free Schools.



If you have questions about the STEPS program, using MyPLN to take STEPS courses, or any other information on this site, contact Jill Barnes, Executive Emergency Strategist, Emergency Services at (213) 241-5337 or at [jill.barnes@lausd.net](mailto:jill.barnes@lausd.net).

# steps.lausd.net







# DOWNLOAD. PREPARE. ACT.

Get the free **LAUSD Emergency Plan App** for your mobile device. Learn how LAUSD schools respond to earthquakes, lockdowns, fires, and other emergencies. You can make a difference.

Get *CrisisManager* on your device:

- Download SchoolDude *CrisisManager* from the app store.
- Open *CrisisManager* on your device. Click yes. Follow the prompts.
- Or scan the QR code.



**Download *CrisisManager***  
[achieve.lausd.net/emergencyapps](http://achieve.lausd.net/emergencyapps)



Versions available for:

District Employees & Local First Responders  
Parents, Students & Community (English/Spanish)





## Initial Response Actions

Drop, Cover and Hold On  
Shelter-In-Place  
Lockdown  
Evacuate Building  
Relocation  
All Clear

## Emergency Procedures

Active Shooter on Campus  
Aircraft Crash  
Animal Disturbance  
Biological or Chemical Release  
Bomb Threat  
Bus Disaster  
Disorderly Conduct  
Earthquake  
Explosion/Risk of Explosion  
Fire in Surrounding Area  
Fire on School Grounds  
Flooding  
Loss or Failure of Utilities  
Motor Vehicle Crash  
Public Health Emergencies  
Psychological Trauma  
Suspected Contamination of Food or Water  
Threat of Violence  
Tsunami Response  
Unlawful Demonstration/Walkout





# There's an app for that!

## [Achieve.lausd.net/emergencyapps](http://Achieve.lausd.net/emergencyapps)



English Version



Spanish Version



Training + Certification

Supplies & Products



FIND A CLASS



LOS ANGELES, CA



0

**Find a Class**

SELECT A CLASS TYPE

LOS ANGELES, CA

**Training + Certification:  
Simple, Fast, And Easy**

## Our Class Programs



[redcross.org/take-a-class](https://redcross.org/take-a-class)



# Community Emergency Response Team

Home > Division of District Operations > STEPS > CERT



## CERT

### About CERT

The Community Emergency Response Team (CERT) program educates people about disaster preparedness for hazards that may impact their area and trains them in basic disaster response skills, such as fire safety, light search and rescue, team organization, and disaster medical operations. Using the training learned in the classroom and during exercises, CERT members can assist others in their neighborhood or workplace following an event when professional responders are not immediately available to help. CERT members also are encouraged to support emergency response agencies by taking a more active role in emergency preparedness projects in their community.

CERT is a national program offered by local fire departments and other civic agencies to members of their community. It is a series of classes consisting of about 17 hours of hands-on and classroom training. Skills covered include: Disaster preparedness, fire suppression, disaster medical operations, light search and rescue, disaster psychology, team organization, and terrorism. CPR and general first aid are not covered in the CERT curriculum. [CERT syllabus](#)

### Community CERT

Schools can host CERT classes for staff and others, arranged through the local fire department. If you are hosting a school-based CERT class through the fire department and you would like to open that class to other LAUSD employees, you may advertise it here. Send an email with the dates/time/location of the course, along with a contact person's information to [emergencyservices@lausd.net](mailto:emergencyservices@lausd.net). Please do send us a roster of employees







## LAFD CERT PROGRAM

The Community Emergency Response Team Program's concept was developed and implemented by the Los Angeles Fire Department (LAFD) in 1985. The 1987 Whittier Narrows earthquake underscored the area-wide threat of a major disaster in California. Further, it confirmed the need for training civilians to meet their immediate needs. As a result, the LAFD created this program to train citizens and private and government employees.

The training program that LAFD initiated makes good sense and furthers the process of citizens understanding their responsibility in preparing for disaster. It also increases their ability to safely help themselves, their family and their neighbors. The Federal Emergency Management Agency (FEMA) recognizes the importance of preparing citizens. The Emergency Management Institute (EMI) and the National Fire Academy adopted and expanded the CERT materials making them applicable to all hazards.

The CERT course will benefit any citizen who takes it. This individual will be better prepared to respond to and cope with the aftermath of a disaster. Additionally, if a community wants to supplement its response capability after a disaster, civilians can be recruited and trained as neighborhood, business, and government teams that, in essence, will be auxiliary responders. These groups can provide immediate assistance to victims in their area, organize spontaneous volunteers who have not had the training, and collect disaster intelligence that will assist professional responders with prioritization and allocation of resources following a disaster.

To schedule a CERT class or other type of training, you can do the following: Click on this link:

**COMMUNITY TRAINING REQUEST** - You can also call [213 202-3136](tel:2132023136) or send an email to [lafdcert@lacity.org](mailto:lafdcert@lacity.org).

# [lafd.org/cert](http://lafd.org/cert)



## Community Emergency Response Team (CERT) Training

Following a major disaster, fire and rescue resources may be unable to immediately respond to all those in need. In such a crisis, it will be neighbors assisting neighbors until emergency response personnel can arrive. Community Emergency Response Team (CERT) training provides residents with the skills and tools necessary to take care of themselves, their families, neighbors, and coworkers in the event of a disaster.

LACoFD offers free, FEMA-approved 20-hour CERT training to the communities we serve. Classes are taught by trained emergency personnel, including firefighters and Emergency Medical Services (EMS) personnel. Through this training, residents learn about hazards that may impact their area as well as basic disaster response skills, such as fire safety, light search and rescue, team organization, and disaster medical operations. Upon completion of the course, CERT members can assist others in their neighborhood or workplace following an event when professional responders are not immediately available to help.

It is important to note that CERT volunteers do not work for LACoFD. Instead, volunteers are registered with their respective cities, unincorporated areas or local law enforcement agencies. In the event of an emergency, some volunteers become part of the disaster plan for local authorities. Upon activation of an Emergency Operations Center, a city representative, a Fire Department liaison or law enforcement liaison will contact CERT volunteers and provide direction about how those volunteers will be utilized. Participants have no obligation or commitment to respond or act should a disaster occur.

### How CERT's Operate

As each CERT is organized and trained, its members select a team leader and an alternate and identify an emergency meeting location, or staging area, to be used in the event of an emergency. Teams are encouraged to go into action even during relatively moderate emergencies, regardless of actual need, to gain practice mobilizing and assessing damage.

The staging area is where the fire department and other services will interact with CERTs. Having a centralized contact point makes it possible to communicate damage assessments and allocate volunteer resources more effectively.

Damage from disasters may vary considerably from one location to another. In an actual disaster, CERTs are deployed progressively and as needs dictate. Members are taught to assess their own needs and those in their immediate environment first.



[REGISTER FOR A CLASS](#)



*Trained CERT Members practice their skills during periodic drills. During these exercises, CERT volunteers keep their skills up-to-date and learn new information from LA County Fire Department personnel.*

# [fire.lacounty.gov/lacofd-cert-program](https://fire.lacounty.gov/lacofd-cert-program)





# School Emergency Information for Parents

The safety of children is the top priority in the Los Angeles School District during a disaster! We plan and prepare for various emergency situations and work to mitigate hazards of all kinds in and around our schools. Schools hold regular emergency drills, covering fire, earthquake, chemical spill, and dangerous person scenarios annually.

Los Angeles Unified School District

## PARENTS - DO YOU KNOW HOW YOUR CHILD'S SCHOOL PREPARES FOR EMERGENCIES?

**School Emergency Information for Parents**

The safety of children is the top priority in the Los Angeles School District during a disaster! We plan and prepare for various emergency situations and work to mitigate hazards of all kinds in and around our schools. Schools hold regular emergency drills, covering fire, earthquake, chemical spill, and dangerous person scenarios annually.

**How We Prepare for Emergencies**

**School Response to Emergencies**

If there is an emergency at school, school personnel have been trained and will react quickly to protect children. If the emergency is an active shooter, school personnel will follow the "Run, Hide, Fight" protocol. If there is an earthquake, students will be instructed to "Drop, Cover, and Hold On." If there is a fire, students will be instructed to "Get Down and Stay Low." If there is a lockdown, students will be instructed to "Lockdown." If there is a shelter in place, students will be instructed to "Shelter in Place." If there is a public health emergency, students will be instructed to "Stay Home, Stay Safe." Schools will act to protect students, and will prioritize the safety of students above all else. If necessary, if students are in danger, they will be taken to a safe location.

**For more information, click on the links below**

- Earthquake
- Fire
- Tsunami
- Lockdown
- Shelter in Place
- Public Health

Communicating with the State at Emergency  
 Family Responsibilities Following an Emergency  
 How Parents can be Better Prepared

Site Created by: iCiv Learning, Content Mastery & Web Developer Network | © 2011 Los Angeles Unified School District

**PARENT EMERGENCY INFORMATION.LAUSD.NET**





# Other Opportunities

- School Safety Committee Membership
- Emergency Team Membership
- Contribute to ISSP Assessments
- Post-Incident/Drill Briefings



# Wonderings?



Being prepared before a disaster strikes will take care of the most important people first.

You and your family.

It may be the difference between being a victim and a **survivor**.





**Your participation is  
much appreciated.**







Need assistance?

Contact:

**Office of Emergency Services**

Division of District Operations

213-241-5337

